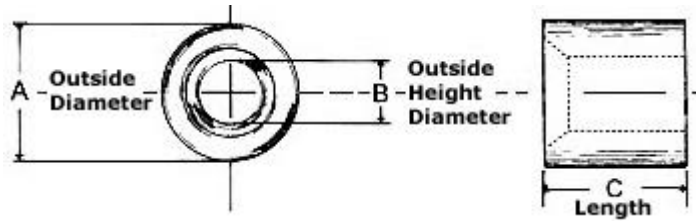


## Aluminum Button Stop



Rope Size & Sleeve Size	A Outside Diameter	B Inside Diameter	C Length	Approx. Wt. Per 1000 Pcs.
1/16	.250	.078	5/32	.72
5/64	.250	.094	5/32	.64
7/64	.250	.109	5/32	.60
3/32	.344	.112	5/16	2.48
1/8	.344	.152	5/16	2.30
5/32	.437	.185	11/32	4.10
3/16	.437	.216	11/32	3.62
7/32	.437	.250	11/32	3.30
1/4	.688	.281	11/16	20.5
9/32	.688	.312	11/16	19.25
5/16	.688	.375	11/16	17.4
3/8	.688	.406	11/16	16.4

**Holding strength is approximately 1/3 of rated cable strength when properly swaged. However, to determine the exact holding strength, PULL TESTING IS ESSENTIAL prior to use. This step insures the proper selection of materials, the correct swaging procedure, and an ample margin of safety for the intended use.**