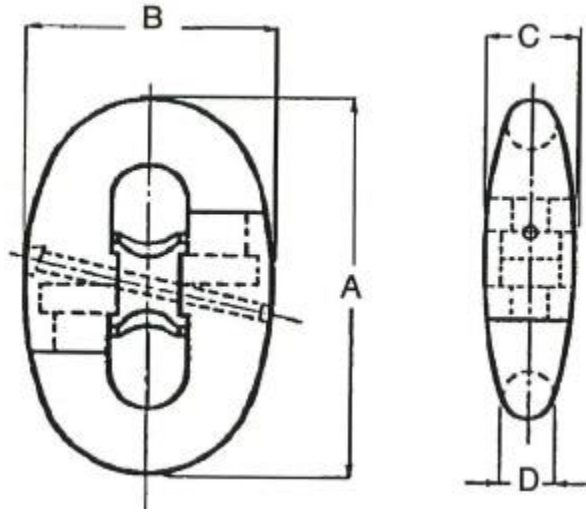


# KENTER JOINING SHACKLES



NOMINAL DIAMETER		A	B	C	WEIGHT		PROOF TEST KGF	BREAK TEST KGF
mm	inches				mm	mm		
16	5/8	96	67	24	.57	1.25	15100	21600
19	3/4	120	84	30.5	1.09	2.40	21600	30900
22	7/8	134	93	33	1.75	3.8	29300	41700
24	15/16	144	101	36	2.1	4.6	34000	48500
25	1	152	107	38	2.5	4.8	38000	54300
29	1-1/8	174	122	44	4.8	5.0	49200	70400
32	1-1/4	192	134	49	5.0	5.7	59500	84900
34	1-3/8	210	146	54	6.5	14.3	70400	100900
36	1-7/16	216	151	55	8.0	17.6	76700	109400
38	1-1/2	228	160	48	9.0	19.8	83300	118900
42	1-5/8	252	176	64	12.0	26.5	102000	143400
44	1-3/4	264	185	67	14.0	30.9	111900	159900
46	1-13/16	276	193	70	15.0	33.1	119800	171100
48	1-7/8	288	202	73	18.0	39.7	130000	185100
51	2	306	214	78	21.0	46.3	145400	207700
54	2-1/8	324	227	82	24.0	52.9	162000	231500
56	2-3/16	336	235	85	26.0	57.3	174000	248000
58	2-1/4	348	244	88	31.0	38.3	185400	265000
60	2-3/8	360	252	91	34.0	75.0	199600	285200
62	2-7/16	372	260	94	36.0	79.4	210000	300000
64	2-1/2	384	269	97	38.0	83.8	223000	319000
67	2-5/8	402	281	102	41.0	90.4	242900	347000
70	2-3/4	420	294	106	52.4	115.7	263500	376400
73	2-7/8	438	307	111	60.0	132.3	285000	407000
76	3	456	319	116	70.0	154.3	308200	440200

78	3-1/16	468	328	119	71.0	156.5	322000	459000
84	3-5/16	504	353	128	92.0	202.8	369300	527600
87	3-7/16	522	365	132	103.0	227.1	395100	564300
89	3-1/2	534	374	135	113.0	249.1	409000	584300
92	3-5/8	552	386	140	115.0	253.5	434800	621200
95	3-3/4	570	399	144	132.0	291.0	462300	660100
102	4	612	428	155	163.0	359.4	522100	746000
108	4-1/4	648	454	164	196.0	432.1	577000	825000
111	4-3/8	666	466	169	213.0	469.6	607000	867200
114	4-1/2	684	479	173	233.0	513.7	637300	910900