

### Python® Super 8V (Swage Compacted) Overhead Crane Wire Rope

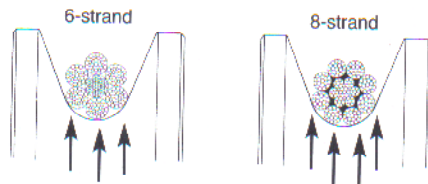
#### Construction:

8 x 25 Filler

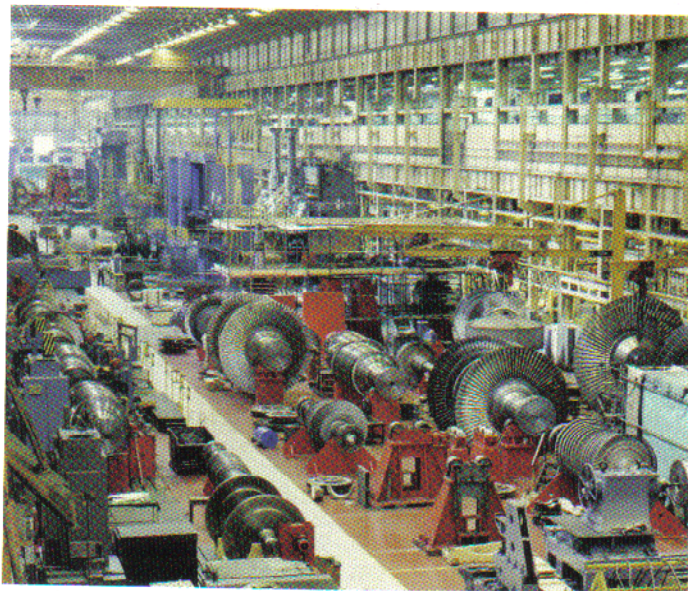
8-strand overhead crane wire rope with a plastic coated core to prevent inner undetectable fatigue breaks. The plastic coating also increases fatigue life and ensures permanent core lubrication. Super-8V is a swage compacted rope for better multiple layer drum abrasion resistance and increased strength.

Python® Super 8V is available in right- and in left lay configurations to adopt to the corresponding drum groove direction.

Furthermore, using right- and left hand rope on the same crane results in a rope system which is very stable against block twisting.



The 8-strand construction provides an increase in contact points between rope and sheave. Less wear of the rope and of your equipment.



## Breaking Strengths

**Note:** The maximum CAPACITY, WORKING LOAD LIMIT (WLL), or LINE PULL of the rope usually is 1/5 of the below stated values. For specific information consult the standards applicable to your rope application.

### Imperial Python® Super 8-V

Rope dia. inch	Minimum Strength Super 8 V IPS	Minimum Strength Super 8 V EIPS	Minimum Strength Super 8 V EEIPS	Weight per foot lbs
1/2	14.9	16.5	18.2	.51
9/16	19.0	21.0	23.1	.65
5/8	23.7	26.2	28.9	.82
3/4	33.4	37.0	40.8	1.15
7/8	44.8	49.6	54.7	1.54
1	59.7	66.1	72.8	2.06
1-1/8	75.7	83.8	92.4	2.61
1-1/4	94.7	104.9	115.6	3.27
1-3/8	Data upon request.			
1-1/2				
1-5/8				
1-3/4				
1-7/8				

### Metric Python® Super 8-V

Rope dia. mm	Minimum Strength Super 8 V 1770 N/mm <sup>2</sup>	Minimum Strength Super 8 V 1960 N/mm <sup>2</sup>	Minimum Strength Super 8 V 2160 N/mm <sup>2</sup>	Weight per mtr kgs
12	119.0	131.8	145.2	.67
13	139.7	154.7	170.4	.79
14	161.9	179.3	197.6	.92
15	185.9	205.8	226.8	1.05
16	211.5	234.2	258.1	1.19
17	238.8	264.4	291.4	1.35
18	267.8	296.5	326.7	1.52
19	298.2	330.2	364.0	1.68
20	330.5	366.0	403.3	1.87
22	399.9	442.8	488.0	2.27
24	475.8	526.9	580.7	2.69
26	558.4	618.4	681.6	3.16
28	647.7	717.2	790.5	3.66
30	743.6	823.4	907.4	4.21
32	846.0	936.8	1032.4	4.79
34	Data upon request.			
36				
38				
40				
42				